

CGA LICENCED PREMISES

© 2024 CACI Limited and all other applicable third party notices (CGA) can be found at www.caci.co.uk/copyrightnotices.pdf

Area: P04209_Plungington, Preston, PR2 3AR - Tra
 Base: Great Britain
 Year: 2023

Licence Type	Profile	Per 1000 Pop (Area)	Per 1000 Pop (Base)	Index	0	100	200
Pubs & Full On	48	71.7	81.7	88			
Proprietary Club	7	10.5	7.3	143			
Registered Club	21	31.4	28.2	111			
Restaurant	16	23.9	32.1	74			
Residential	1	1.5	2.7	56			

Name	Description	License Type	Owner Name	Postcode
Wellfield	Amber Taverns	Pubs & Full On	Amber Taverns	PR 1 7BH
Stanley	Star Pubs & Bars	Pubs & Full On	Star Pubs & Bars	PR 1 1DD
Riva Showbar	Independent Free	Proprietary Club	Independent Free	PR 1 1DJ
Black A Moor Head	Admiral Taverns Ltd	Pubs & Full On	Admiral Taverns Ltd	PR 1 1DD
Moor Park	Star Pubs & Bars	Pubs & Full On	Star Pubs & Bars	PR 1 1LA
Moorbrook Inn	Independent Free	Pubs & Full On	Independent Free	PR 1 1RU
Army & Navy Hotel	Unknown	Pubs & Full On	Unknown	PR 1 1TS
Royal Consort	Dorbiere	Pubs & Full On	Dorbiere	PR 1 1TS
New Meadow St Labour & Social Club	Independent Free	Registered Club	Independent Free	PR 1 1YQ
Grey Friar	Wetherspoons GB	Pubs & Full On	Wetherspoons GB	PR 1 2EJ
Old Black Bull	Greene King	Pubs & Full On	Greene King	PR 1 2AT
Shahzaad Tandoori	Independent Free	Restaurant	Independent Free	PR 1 2AT
Dog & Partridge Hotel	Star Pubs & Bars	Pubs & Full On	Star Pubs & Bars	PR 1 2AT
Northern Way	Amber Taverns	Pubs & Full On	Amber Taverns	PR 1 2ED
Sun Hotel	Daniel Thwaites plc	Pubs & Full On	Daniel Thwaites plc	PR 1 2EE
Black Horse	Robinsons	Pubs & Full On	Robinsons	PR 1 2EJ
Switch	Independent Free	Proprietary Club	Independent Free	PR 1 2ES
Holiday Inn	InterContinental Hotels Group	Pubs & Full On	InterContinental Hotels Group	PR 1 3AU
Preston Masonic Club Ld	Independent Free	Registered Club	Independent Free	PR 1 2QU
New Britannia Inn	Stonegate Pub Company	Pubs & Full On	Stonegate Pub Company	PR 1 2XB
Ship Inn	Greene King	Pubs & Full On	Greene King	PR 1 2XQ
Blue Bell Hotel	Sam Smith	Pubs & Full On	Sam Smith	PR 1 3BS
Reeders School Of Dancing	Independent Free	Proprietary Club	Independent Free	PR 1 6EY
St Gregorys Social Centre	Independent Free	Registered Club	Independent Free	PR 1 6HQ
Preston North End Football Club	Independent Free	Proprietary Club	Independent Free	PR 1 6RU
Deepdale Lab Social & Bowl Club	Independent Free	Registered Club	Independent Free	PR 1 6RX
Vinyl Tap	*Other Small Retail Groups	Pubs & Full On	*Other Small Retail Groups	PR 1 7BE
Adelphi	Stonegate Pub Company	Pubs & Full On	Stonegate Pub Company	PR 1 7DP
Arkwrights	Admiral Taverns Ltd	Pubs & Full On	Admiral Taverns Ltd	PR 1 7EP
Emmanuel Street Labour Club	Independent Free	Registered Club	Independent Free	PR 1 7HU
Princess Alice	Independent Free	Pubs & Full On	Independent Free	PR 1 7SL
Eldon	Trust Inns Limited	Pubs & Full On	Trust Inns Limited	PR 1 7YD
Ashton On Ribble Bowling & Social Club	Independent Free	Registered Club	Independent Free	PR 2 1AJ
Thurlby Club	Independent Free	Registered Club	Independent Free	PR 2 1AL
Wellington Inn	Dorbiere	Pubs & Full On	Dorbiere	PR 2 1AR
Park Hotel	Independent Free	Pubs & Full On	Independent Free	PR 2 1ES
Lane Ends	Greene King	Pubs & Full On	Greene King	PR 2 1HX
Claremount Hotel	Independent Free	Residential	Independent Free	PR 2 1HY
Parkfield Labour Club & Institute	Independent Free	Registered Club	Independent Free	PR 2 2LH
Tang	Independent Free	Restaurant	Independent Free	PR 2 2NH
Wheatsheaf	Amber Taverns	Pubs & Full On	Amber Taverns	PR 2 2NL
Grand Junction Inn	Independent Free	Pubs & Full On	Independent Free	PR 2 2NN
Fulwood Conservative Club	Independent Free	Registered Club	Independent Free	PR 2 3AE
Plungington Hotel	Admiral Taverns Ltd	Pubs & Full On	Admiral Taverns Ltd	PR 2 3AR
Brook Tavern	Admiral Taverns Ltd	Pubs & Full On	Admiral Taverns Ltd	PR 2 3AH
St Anthonys Social Centre	Independent Free	Registered Club	Independent Free	PR 2 3SQ
Ingol Labour Club	Independent Free	Registered Club	Independent Free	PR 2 3YP
White Hart	Stonegate Pub Company	Pubs & Full On	Stonegate Pub Company	PR 2 8AD
Preston Golf Club	Independent Free	Registered Club	Independent Free	PR 2 8DD
Lonsdale Club Co-Op Sports Club	Independent Free	Registered Club	Independent Free	PR 2 8DB
Fulwood Club	Independent Free	Registered Club	Independent Free	PR 2 8NH
St John Baptist Church Club And St Mart	Independent Free	Registered Club	Independent Free	PR 2 9TH
Black Bull	Mitchells & Butlers	Pubs & Full On	Mitchells & Butlers	PR 2 9UP

CGA LICENCED PREMISES

© 2024 CACI Limited and all other applicable third party notices (CGA) can be found at www.caci.co.uk/copyrightnotices.pdf

Area: P04209_Plungington, Preston, PR2 3AR - Tra
 Base: Great Britain
 Year: 2023

Licence Type	Profile	Per 1000 Pop (Area)	Per 1000 Pop (Base)	Index	0	100	200
Pubs & Full On	48	71.7	81.7	88			
Proprietary Club	7	10.5	7.3	143			
Registered Club	21	31.4	28.2	111			
Restaurant	16	23.9	32.1	74			
Residential	1	1.5	2.7	56			



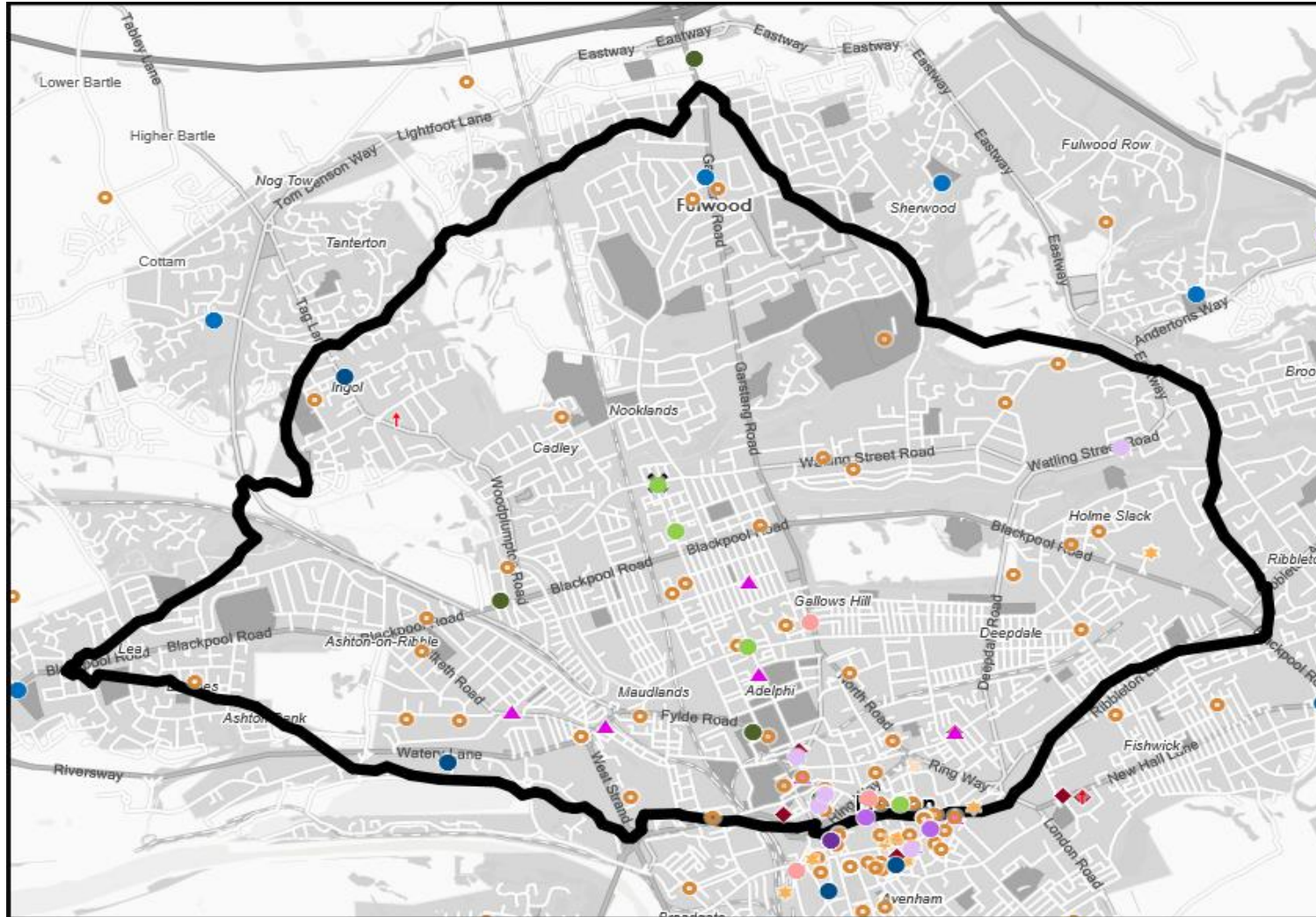
Name	Description	License Type	Owner Name	Postcode
Ribble Pilot	Marston's	Pubs & Full On	Marston's	PR 2 2YN
Guild Merchant	Marston's	Pubs & Full On	Marston's	PR 2 3UY
Golden Cross Hotel	Independent Free	Pubs & Full On	Independent Free	PR 1 1DD
Market Tap	Unknown	Pubs & Full On	Star Pubs & Bars	PR 1 2ES
University Of Central Lancashire Guild	Independent Free	Registered Club	Independent Free	PR 1 7BQ
Roper Hall	Greene King	Pubs & Full On	Greene King	PR 1 2XQ
Preston Rock N Bowl	Stonegate Pub Company	Pubs & Full On	Stonegate Pub Company	PR 1 2EE
Lancashire County Club Staff Club	Independent Free	Proprietary Club	Independent Free	PR 1 7PH
St Bernards Mens Catholic Club	Independent Free	Registered Club	Independent Free	PR 1 8RR
Fulwood Tennis Club	Independent Free	Registered Club	Independent Free	PR 2 1NT
Mad Ferret	Independent Free	Registered Club	Independent Free	PR 2 8DY
Maharani	Independent Free	Pubs & Full On	Independent Free	PR 1 2XQ
Preston Playhouse	Independent Free	Restaurant	Independent Free	PR 2 2NN
Preston College	Independent Free	Pubs & Full On	Independent Free	PR 1 2HB
Jaffa	Independent Free	Registered Club	Independent Free	PR 2 8UR
Regal Snooker Club	Independent Free	Restaurant	Independent Free	PR 1 2AT
Azuma	Independent Free	Proprietary Club	Independent Free	PR 1 7NH
Sai Surbhi	Independent Free	Restaurant	Independent Free	PR 1 2EE
Source	Independent Free	Restaurant	Independent Free	PR 2 9UP
Tinos	Independent Free	Registered Club	Independent Free	PR 1 2TQ
Eastzeast	Independent Free	Restaurant	Independent Free	PR 1 2BB
Legacy Preston International	East Z East	Restaurant	East Z East	PR 1 3BS
Pizza Hut	*Other Small Retail Groups	Pubs & Full On	*Other Small Retail Groups	PR 1 2YF
Play Football	Pizza Hut UK Ltd	Restaurant	Pizza Hut UK Ltd	PR 1 6QY
Nandos	Play Football	Proprietary Club	Play Football	PR 2 3TX
Town House Coffee And Brew Bar	Nandos Restaurants	Restaurant	Nandos Restaurants	PR 1 6QY
Ginger Bistro	Independent Free	Restaurant	Independent Free	PR 1 2AT
Cocos	Independent Free	Restaurant	Independent Free	PR 2 9UP
Enlightened Bar	Independent Free	Restaurant	Independent Free	PR 1 2ED
Silk Route Indian Restaurant	Independent Free	Pubs & Full On	Independent Free	PR 1 2EE
Il Gusto D Italia	Independent Free	Restaurant	Independent Free	PR 1 8UY
Five Guys	Independent Free	Restaurant	Independent Free	PR 1 8UY
Guild Alehouse	Five Guys	Restaurant	Five Guys	PR 2 2NN
Plau	Independent Free	Pubs & Full On	Independent Free	PR 1 6QY
Orchard Bar	Independent Free	Pubs & Full On	Independent Free	PR 1 1DD
Crafty Beggars	Independent Free	Pubs & Full On	Independent Free	PR 1 2EE
Bar 143	Independent Free	Pubs & Full On	Independent Free	PR 1 2LA
Aviary	Independent Free	Pubs & Full On	Independent Free	PR 2 9RX
Friargate Tap Room	Independent Free	Pubs & Full On	Independent Free	PR 1 2EJ
		Pubs & Full On	Independent Free	PR 2 1HX
		Pubs & Full On	Independent Free	PR 1 2AT

MAP OF AREA

© 2024 CACI Limited and all other applicable third party notices (CGA) can be found at www.caci.co.uk/copyrightnotices.pdf

Source: OS Open Data 2018

Area: P04209_Plungington, Preston, PR2 3AR - Travel Time, 10 Mins



KEY

- Large pub co's & bars
 - Admiral Taverns Ltd
 - Ei Group
 - Greene King
 - Marston's
 - Mitchells & Butlers
 - Punch Pub Company
 - Stonegate Pub Company
 - Star Pubs & Bars
 - Wetherspoon
 - Whitbread
 - Shepherd Neame
- Small to medium pub co's & bars
- Family Brewers with pubs
- Hotels
- Restaurants
- Leisure
- Independent
- Other
- Site Location
- Boundary

ACORN CATEGORY PROFILE - HOUSEHOLDS

© 2024 CACI Limited and all other applicable third party notices (Acorn) can be found at www.caci.co.uk/copyrightnotices.pdf

Area: P04209_Plungington, Preston, PR2 3AR - Travel Time, 10 Mins
Base: Great Britain
Year: 2023

Acorn Category Description	Area Profile	% for Area	% for Base	Index 0	100	200
1 Affluent Achievers	3,724	14.0	22.1	63		
2 Rising Prosperity	371	1.4	10.2	14		
3 Comfortable Communities	7,067	26.5	26.5	100		
4 Financially Stretched	6,592	24.8	23.7	104		
5 Urban Adversity	8,804	33.1	17.2	192		
6 Not Private Households	67	0.3	0.3	73		
Total households		26,625				

Acorn Category Pen Portrait

4 Financially Stretched 12.2M UK Adults 23.1% of UK

Age range
All ages

Financial situation
Running into debt Saving a lot

Children at home
Mixed

House type
Semi-detached or terraced

House tenure
Social renting

Number of beds
1-3

Acorn Groups within Category 4: Financially Stretched

- K Student Life 13%
- L Modest Means 34%
- M Striving Families 34%
- N Poorer Pensioners 20%

This category contains a mix of traditional areas of Britain, including social housing developments specifically for the elderly. It also includes student term-time areas.

ACORN GROUP PROFILE - HOUSEHOLDS

© 2024 CACI Limited and all other applicable third party notices (Acorn) can be found at www.caci.co.uk/copyrightnotices.pdf

Area: P04209_Plungington, Preston, PR2 3AR - Travel Time, 10 Mins
Base: Great Britain
Year: 2023

Acorn Group Description	Area Profile	% for Area	% for Base	Index 0	100	200
1. Affluent Achievers						
1.A Lavish Lifestyles	0	0.0	1.1	0		
1.B Executive Wealth	1,173	4.4	11.3	39		
1.C Mature Money	2,551	9.6	9.6	99		
2. Rising Prosperity						
2.D City Sophisticates	0	0.0	3.8	0		
2.E Career Climbers	371	1.4	6.4	22		
3. Comfortable Communities						
3.F Countryside Communities	0	0.0	5.7	0		
3.G Successful Suburbs	1,001	3.8	6.0	63		
3.H Steady Neighbourhoods	2,833	10.6	7.4	144		
3.I Comfortable Seniors	1,078	4.0	2.9	142		
3.J Starting Out	2,155	8.1	4.6	178		
4. Financially Stretched						
4.K Student Life	1,315	4.9	2.5	197		
4.L Modest Means	2,858	10.7	8.0	134		
4.M Striving Families	834	3.1	7.4	42		
4.N Poorer Pensioners	1,585	6.0	5.8	103		
5. Urban Adversity						
5.O Young Hardship	5,066	19.0	6.3	304		
5.P Struggling Estates	1,006	3.8	5.7	66		
5.Q Difficult Circumstances	2,732	10.3	5.2	196		
6. Not Private Households						
6.R Not Private Households	67	0.3	0.3	73		
Total households	26,625					

Acorn Group Pen Portrait

6

Not Private Households

790k
UK Adults

1.5%
of UK

These are postcodes where the bulk of the residents are not living in private households.

The category forms a single group, R: Not private households, which is sub-divided into three types:

60 Active communal population –
 Generally this is accommodation that may be unoccupied for part of the year, or where the people living in the accommodation regularly change. Other active communal accommodation might include hostels, children's homes, refuges and local authority accommodation for travellers.

61 Inactive communal population –
 These people may be in communal establishments but unlikely to be active consumers. This includes care homes, hospitals, and other medical or nursing establishments where due to their health, the residents are unlikely to get out and about to function as regular consumers. It also includes prisons.

62 Business areas without resident population –
 These are postcodes where we believe there is no regular resident population. An example of this might be a business or industrial park.

ABCDEFGHIJKLMNOPQR

CATEGORY	GROUP	TYPE	MAP	WHAT IS ACORN?
----------	-------	------	-----	----------------

ACORN TYPE PROFILE - HOUSEHOLDS

© 2024 CACI Limited and all other applicable third party notices (Acorn) can be found at www.caci.co.uk/copyrightnotices.pdf

Area: P04209_Plungington, Preston, PR2 3AR - Travel Time, 10 Mins
 Base: Great Britain
 Year: 2023

Sort by: Acorn Structure
 Index
 Profile %

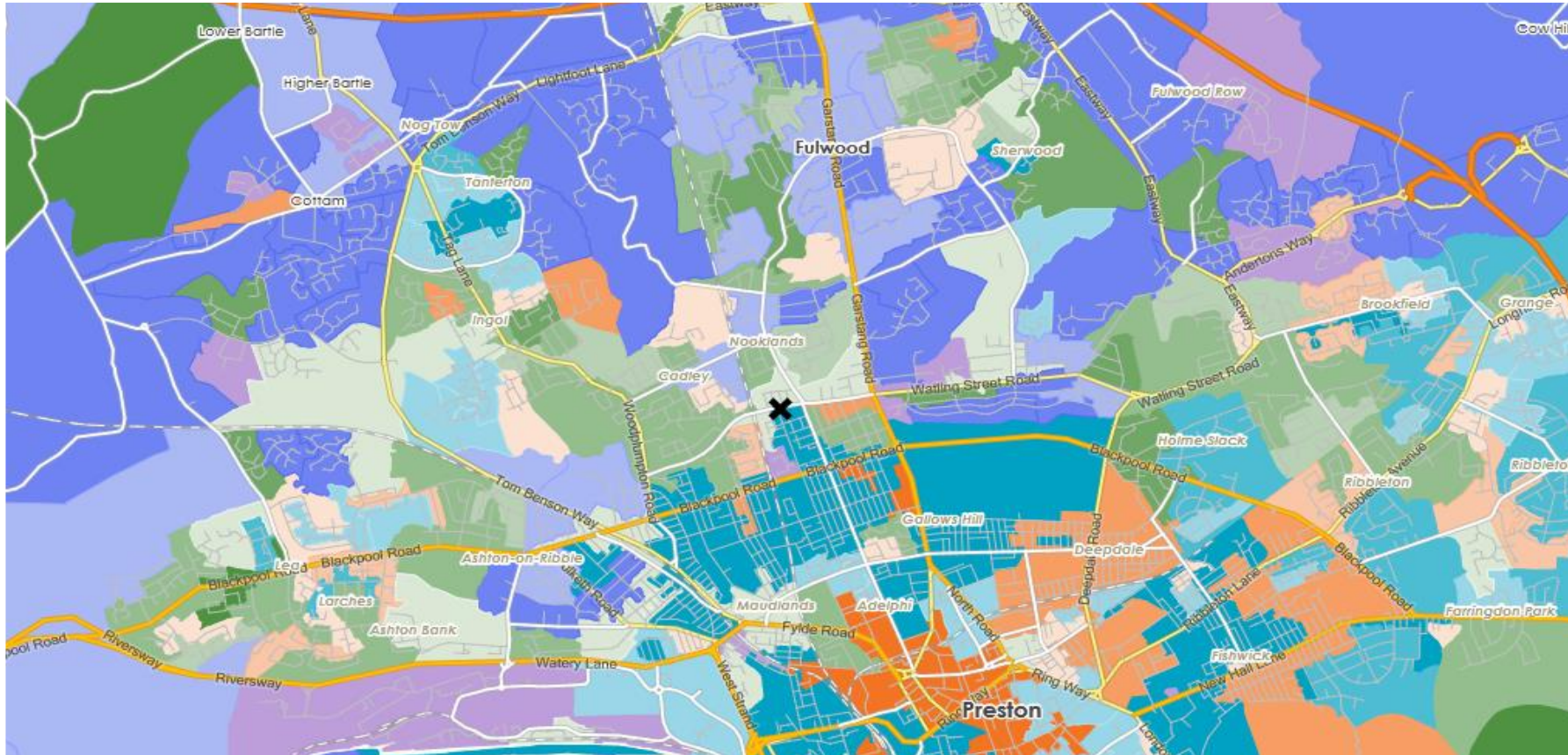
Acorn Type Description	Area Profile	% for Area	% for Base	Index	0	100	200
1. Affluent Achievers							
1.A Lavish Lifestyles							
1.A.1 Exclusive enclaves	0	0.0	0.1	0			
1.A.2 Metropolitan money	0	0.0	0.1	0			
1.A.3 Large house luxury	0	0.0	0.9	0			
1.B Executive Wealth							
1.B.4 Asset rich families	395	1.5	2.6	56			
1.B.5 Wealthy countryside commuters	0	0.0	2.5	0			
1.B.6 Financially comfortable families	74	0.3	2.2	13			
1.B.7 Affluent professionals	98	0.4	0.9	43			
1.B.8 Prosperous suburban families	493	1.9	1.5	121			
1.B.9 Well-off edge of towners	113	0.4	1.6	26			
1.C Mature Money							
1.C.10 Better-off villagers	0	0.0	3.1	0			
1.C.11 Settled suburbia, older people	2,232	8.4	2.8	298			
1.C.12 Retired and empty nesters	173	0.6	2.5	26			
1.C.13 Upmarket downsizers	146	0.5	1.3	42			
2. Rising Prosperity							
2.D City Sophisticates							
2.D.14 Townhouse cosmopolitans	0	0.0	0.7	0			
2.D.15 Younger professionals in smaller flats	0	0.0	1.5	0			
2.D.16 Metropolitan professionals	0	0.0	0.7	0			
2.D.17 Socialising young renters	0	0.0	1.0	0			
2.E Career Climbers							
2.E.18 Career driven young families	14	0.1	2.0	3			
2.E.19 First time buyers in small, modern homes	357	1.3	3.4	40			
2.E.20 Mixed metropolitan areas	0	0.0	1.0	0			
3. Comfortable Communities							
3.F Countryside Communities							
3.F.21 Farms and cottages	0	0.0	1.5	0			
3.F.22 Older couples and families in rural areas	0	0.0	1.0	0			
3.F.23 Owner occupiers in small towns and villages	0	0.0	3.2	0			
3.G Successful Suburbs							
3.G.24 Comfortably-off families in modern housing	617	2.3	2.7	86			
3.G.25 Larger family homes, multi-ethnic areas	379	1.4	0.8	171			
3.G.26 Semi-professional families, owner occupied neighbourhoods	5	0.0	2.4	1			
3.H Steady Neighbourhoods							
3.H.27 Suburban semis, conventional attitudes	2,339	8.8	3.5	253			
3.H.28 Owner occupied terraces, average income	283	1.1	1.6	66			
3.H.29 Established suburbs, older families	211	0.8	2.3	34			
3.I Comfortable Seniors							
3.I.30 Older people, neat and tidy neighbourhoods	1,020	3.8	2.4	162			
3.I.31 Elderly singles in purpose-built accommodation	58	0.2	0.5	45			
3.J Starting Out							
3.J.32 Educated families in terraces, young children	1,515	5.7	2.2	264			
3.J.33 Smaller houses and starter homes	640	2.4	2.4	100			
4. Financially Stretched							
4.K Student Life							
4.K.34 Student flats and halls of residence	433	1.6	0.3	486			
4.K.35 Term-time terraces	335	1.3	0.2	505			
4.K.36 Educated young people in flats and tenements	547	2.1	1.9	107			
4.L Modest Means							
4.L.37 Low cost flats in suburban areas	84	0.3	1.4	22			
4.L.38 Semi-skilled workers in traditional neighbourhoods	247	0.9	2.6	35			
4.L.39 Fading owner occupied terraces	604	2.3	2.9	78			
4.L.40 High occupancy terraces, culturally diverse family areas	1,923	7.2	1.0	727			
4.M Striving Families							
4.M.41 Labouring semi-rural estates	0	0.0	1.6	0			
4.M.42 Struggling young families in post-war terraces	65	0.2	1.6	15			
4.M.43 Families in right-to-buy estates	444	1.7	2.0	82			
4.M.44 Post-war estates, limited means	325	1.2	2.2	56			
4.N Poorer Pensioners							
4.N.45 Pensioners in social housing, semis and terraces	94	0.4	0.8	45			
4.N.46 Elderly people in social rented flats	489	1.8	1.0	178			
4.N.47 Low income older people in smaller semis	126	0.5	2.2	21			
4.N.48 Pensioners and singles in social rented flats	876	3.3	1.7	193			
5. Urban Adversity							
5.O Young Hardship							
5.O.49 Young families in low cost private flats	270	1.0	2.2	46			
5.O.50 Struggling younger people in mixed tenure	674	2.5	1.8	141			
5.O.51 Young people in small, low cost terraces	4,122	15.5	2.3	684			
5.P Struggling Estates							
5.P.52 Poorer families, many children, terraced housing	470	1.8	1.6	113			
5.P.53 Low income terraces	0	0.0	0.8	0			
5.P.54 Multi-ethnic, purpose-built estates	0	0.0	1.0	0			
5.P.55 Deprived and ethnically diverse in flats	0	0.0	0.7	0			
5.P.56 Low income large families in social rented semis	536	2.0	1.6	126			
5.Q Difficult Circumstances							
5.Q.57 Social rented flats, families and single parents	244	0.9	1.5	61			
5.Q.58 Singles and young families, some receiving benefits	936	3.5	1.8	200			
5.Q.59 Deprived areas and high-rise flats	1,552	5.8	2.0	296			
6. Not Private Households							
6.R Not Private Households							
6.R.60 Active communal population	1	0.0	0.1	6			
6.R.61 Inactive communal population	66	0.2	0.3	87			
6.R.62 Business areas without resident population	0	0	0	0			
Total households	26,625						

DOMINANT ACORN GROUP - HOUSEHOLDS

© 2024 CACI Limited and all other applicable third party notices (Acorn) can be found at www.caci.co.uk/copyrightnotices.pdf

Source: OS Open Data 2018

Area: P04209_Plungington, Preston, PR2 3AR - Travel Time, 10 Mins



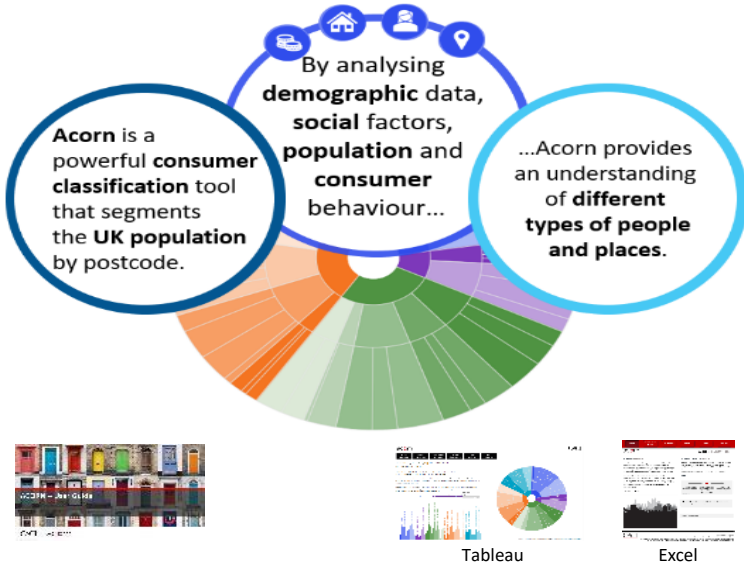
- Dominant Acorn Category
- % Affluent Achievers
- % Rising Prosperity
- % Comfortable Communities
- % Financially Stretched
- % Urban Adversity
- Dominant Acorn Group

- Acorn Groups**
- 1.A Lavish Lifestyles
 - 1.B Executive Wealth
 - 1.C Mature Money
 - 2.D City Sophisticates
 - 2.E Career Climbers
 - 3.F Countryside Communities
 - 3.G Successful Suburbs
 - 3.H Steady Neighbourhoods
 - 3.I Comfortable Seniors
 - 3.J Starting Out
 - 4.K Student Life
 - 4.L Modest Means
 - 4.M Striving Families
 - 4.N Poorer Pensioners
 - 5.O Young Hardship
 - 5.P Struggling Estates
 - 5.Q Difficult Circumstances
 - 6.R Not Private Households

Area boundary

ACORN - WHAT IS IT?

© 2024 CACI Limited and all other applicable third party notices (Acorn) can be found at www.caci.co.uk/copyrightnotices.pdf



6 CATEGORIES 18 GROUPS 62 TYPES

1. Affluent Achievers	● A. Lavish Lifestyles	1-3
	● B. Executive Wealth	4-9
	● C. Mature Money	10-13
2. Rising Prosperity	● D. City Sophisticates	14-17
	● E. Career Climbers	18-20
3. Comfortable Communities	● F. Countryside Communities	21-23
	● G. Successful Suburbs	24-26
	● H. Steady Neighbourhoods	27-29
	● I. Comfortable Seniors	30-31
	● J. Starting Out	32-33
4. Financially Stretched	● K. Student Life	34-36
	● L. Modest Means	37-40
	● M. Striving Families	41-44
	● N. Poorer Pensioners	45-48
5. Urban Adversity	● O. Young Hardship	49-51
	● P. Struggling Estates	52-56
	● Q. Difficult Circumstances	57-59
6. Not Private Households	R. Not Private Households	60-62

1 Affluent Achievers

Age range: **55+**

Financial situation: Running into debt ↔ Saving a lot

Children at home: **0**

12.1M UK Adults

22.8% of UK

House type: **Detached**

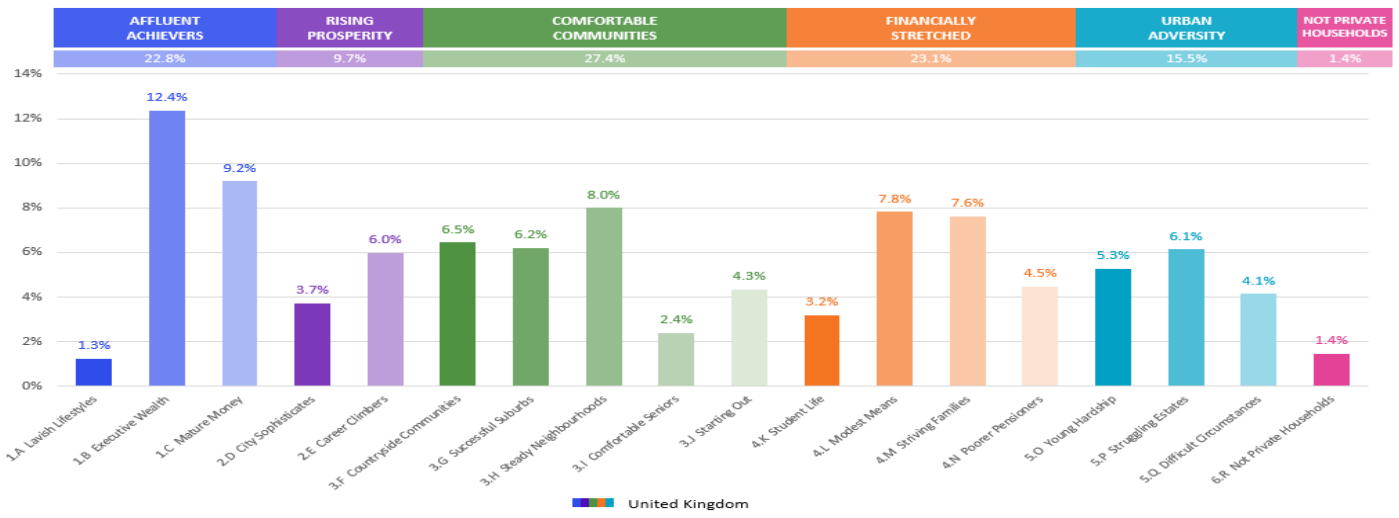
House tenure: **Owned outright**

Number of beds: **4+**

These are some of the most financially successful people in the UK. They live in affluent, high status areas of the country. They are healthy, wealthy and confident consumers.

Acorn Groups within Category 1: Affluent Achievers

- A. Lavish Lifestyles: 6%
- B. Executive Wealth: 54%
- C. Mature Money: 40%

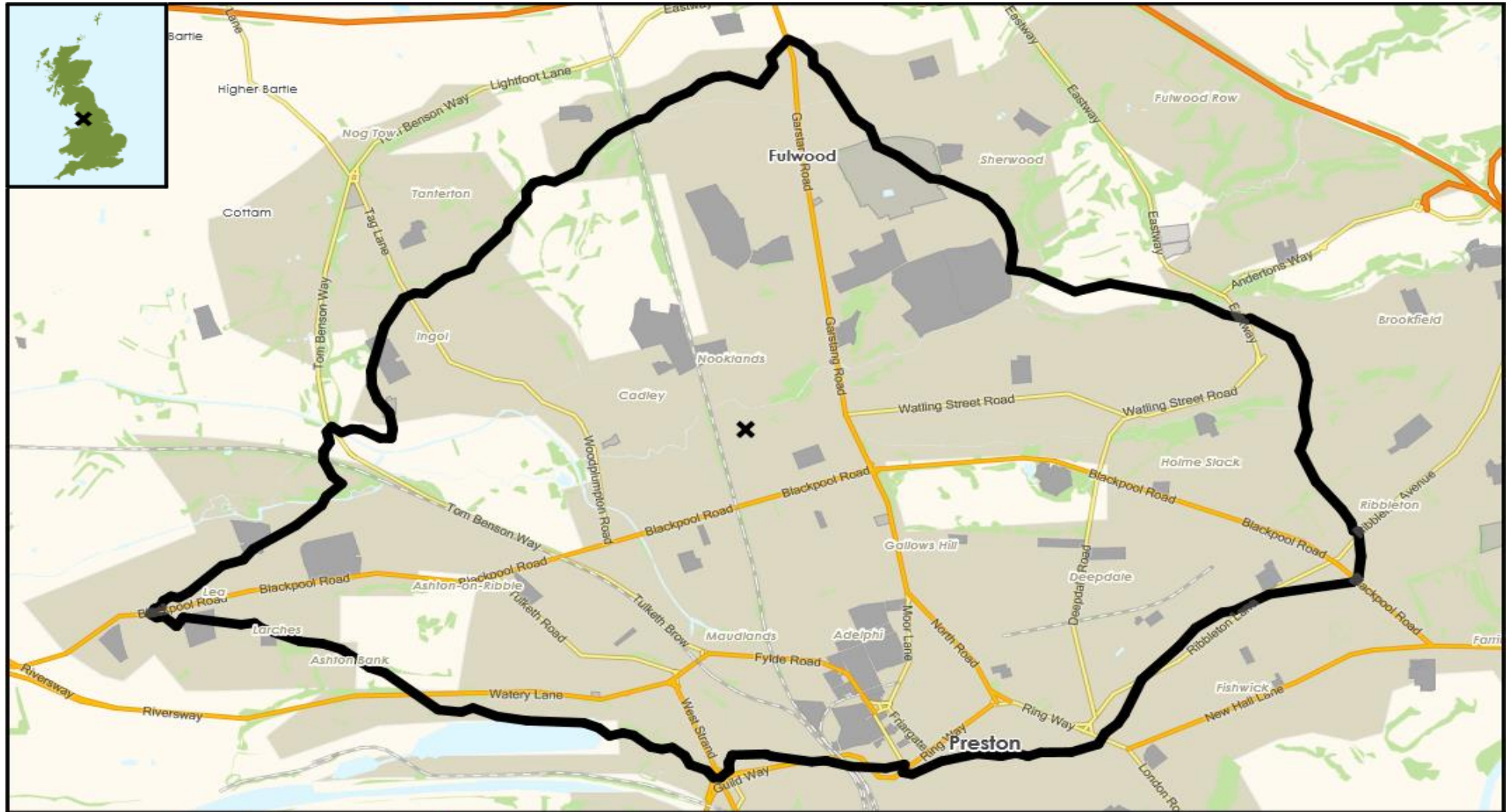


MAP OF AREA

© 2024 CACI Limited and all other applicable third party notices can be found at www.caci.co.uk/copyrightnotices.pdf

Source: OS Open Data 2018

Area: P04209_Plungington, Preston, PR2 3AR - Travel Time, 10 Mins

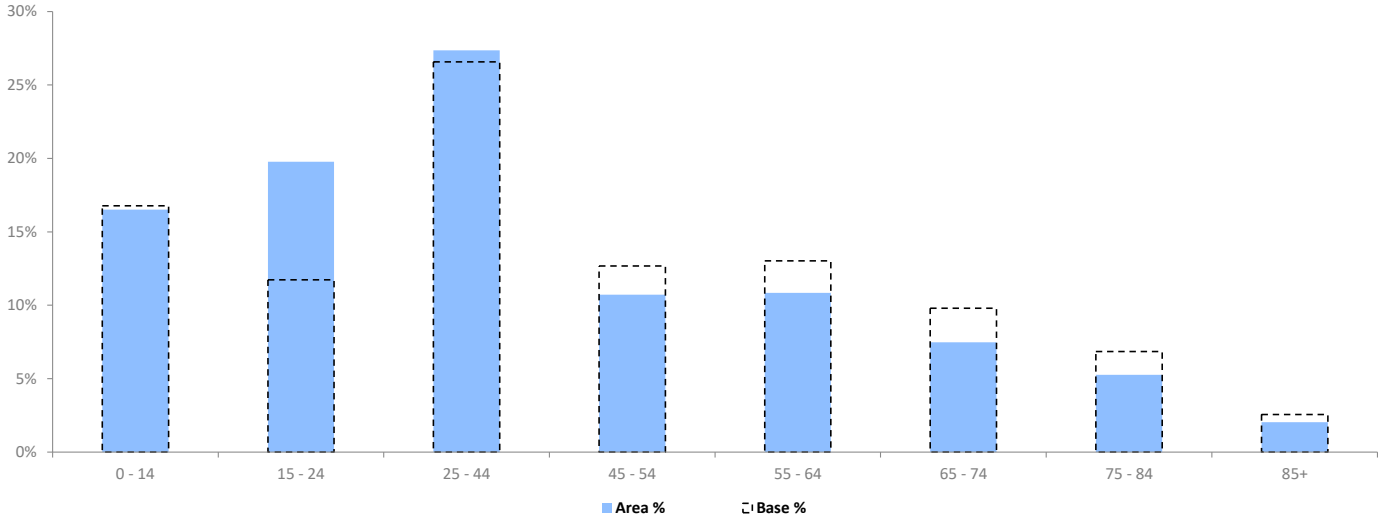


POPULATION PROJECTIONS

© 2024 CACI Limited and all other applicable third party notices (Population Estimates and Projections) can be found at www.caci.co.uk/copyrightnotices.pdf

Area: P04209_Plungington, Preston, PR2 3AR - Travel Time, 10 Mins
 Base: Great Britain
 Year: 2023

	Area Profile	Area %	Base %	Index av=100	0	100	200
0 - 14	11,060	16.5	16.8	98			
15 - 24	13,242	19.8	11.7	168			
25 - 44	18,321	27.4	26.6	103			
45 - 54	7,187	10.7	12.7	85			
55 - 64	7,268	10.9	13.0	83			
65 - 74	5,008	7.5	9.8	76			
75 - 84	3,529	5.3	6.9	77			
85+	1,363	2.0	2.6	80			
Total population	66,978						



EXPENDITURE

© 2024 CACI Limited and all other applicable third party notices (COICOP Expenditure) can be found at www.caci.co.uk/copyrightnotices.pdf

Area: P04209_Plungington, Preston, PR2 3AR - Travel Time, 10 Mins
 Base: Great Britain
 Year: 2023

EXPENDITURE ESTIMATES PER WEEK

	Area Spend	Area spend per hhs	Base spend per hhs	Index av=100	0	100	200
COICOP Categories							
1. Food & non-alcoholic beverages	£1,659,933	£62.06	£66.95	93			
2. Alcoholic beverages, tobacco and narcotics	£711,510	£26.60	£28.12	95			
3. Clothing & Footwear	£584,233	£21.84	£22.40	98			
4. Housing, water, electricity, gas and other fuels	£2,385,109	£89.17	£107.19	83			
5. Furnishings, equipment and routine maintenance	£814,216	£30.44	£36.85	83			
6. Health	£280,371	£10.48	£13.48	78			
7. Transport	£3,152,889	£117.88	£134.74	87			
8. Communication	£402,757	£15.06	£15.74	96			
9. Recreation & Culture	£1,334,891	£49.91	£64.16	78			
10. Education	£513,651	£19.20	£22.26	86			
11. Restaurants & Hotels	£1,505,996	£56.31	£67.11	84			
12. Miscellaneous goods and services	£2,370,129	£88.61	£109.86	81			
Total Expenditure	£15,715,685	£587.57	£688.85	85			

Expenditure calculated for RF Centres includes weighted residential, worker and tourist spend; for RF catchments it includes weighted residential spend only. For all other catchments it includes residential, online and domestic tourist spend (all spend originating from these areas).

The figures are calculated from data from the Living Costs and Family (LCF) survey conducted by the Office for National Statistics. The analyses in this report are carried out by CACI and those who carried out the original collection and analysis of the data bear no responsibility for their further analysis or interpretation. The spend figures are based on current prices for the year stated at the top of the report. The Classification of Individual Consumption by Purpose (COICOP) is published by the UN Statistics Division to provide an international standard for the reporting of expenditure. Totals are controlled to national figures supplied by ONS Consumer Trends.